

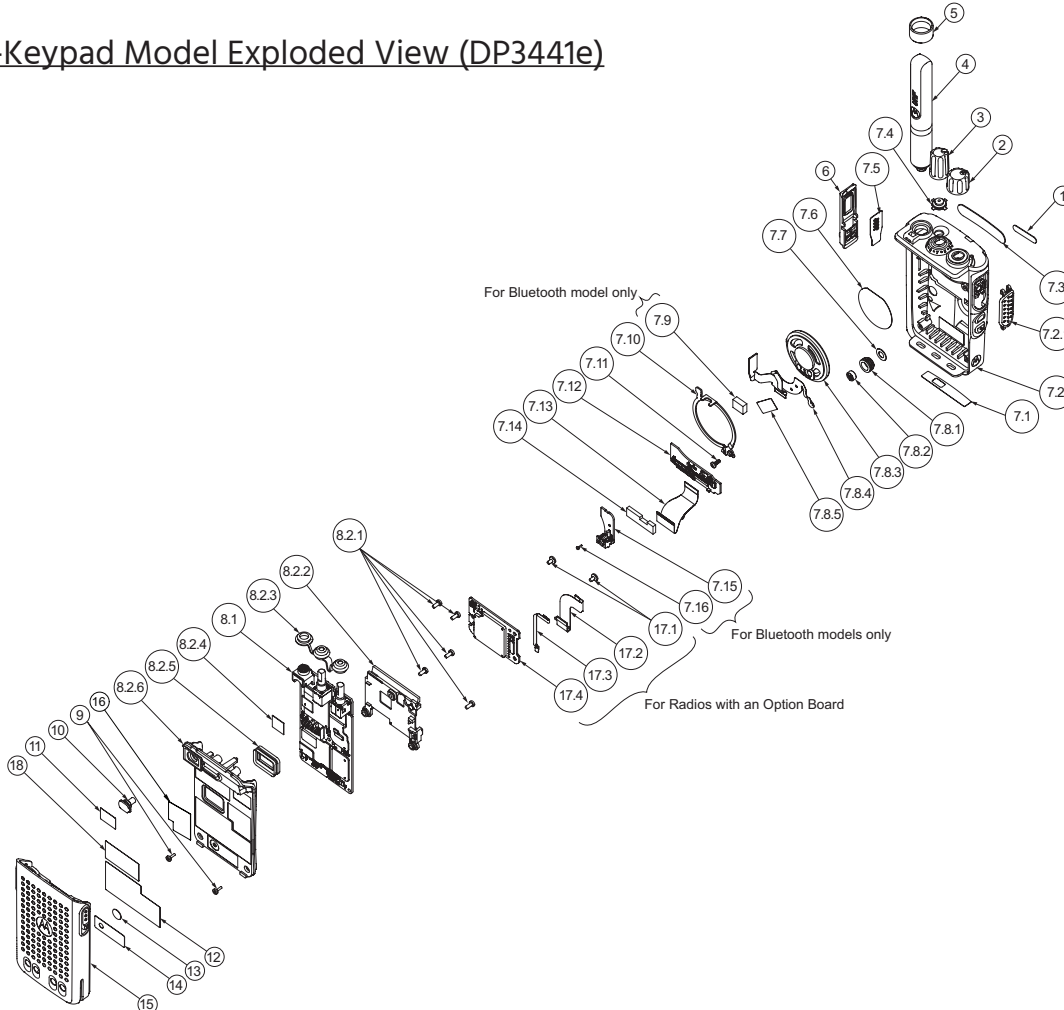
RADIOTRADE

Motorola DP3441e and DP3661e
Exploded Diagrams & Parts Lists

RadioTrade Ltd
Unit 5, The Ringway Centre
Edison Road, Basingstoke
RG21 6YH, UK
T: 01256 40 60 50
E: sales@radiotrade.co.uk
www.radiotrade.co.uk

DP3441e and DP3661e Exploded Mechanical View and Parts List

Non-Keypad Model Exploded View (DP3441e)



Item	Description	Part Number
1	Product Number Label	33012015065
2	Knob, Volume	36012005001
3	Knob, Frequency	36012004001
4	Antenna	NA
5	Antenna ID Band	NA
6	Dust Cover Assembly	0104058J40
7	Front Cover Kit	PMLN7344_
7.1	Label, Front housing	LB000707A01
7.2	Front Housing Assembly	Not supported. Please order Item No.7
7.2.1	Paddle PTT	HN000884A01

Issue Date: 26/07/21

Motorola Solutions follows a policy of continual product improvement. For this reason, the exploded diagrams and parts listed might not be compatible with future revisions of this product and these changes could occur without notice.

RADIOTRADE

Motorola DP3441e and DP3661e
Exploded Diagrams & Parts Lists

RadioTrade Ltd
Unit 5, The Ringway Centre
Edison Road, Basingstoke
RG21 6YH, UK
T: 01256 40 60 50
E: sales@radiotrade.co.uk
www.radiotrade.co.uk

DP3441e Parts List Cont.

Item	Description	Part Number
7.3	Nameplate	33012026001
7.4	Button, Emergency	38012008001
7.5	UC Escutcheon	33012020001
7.6	Mesh, Speaker	Not supported. Please order Item No.7
7.7	Mic Membrane with Stiffener	Not supported. Please order Item No.7
7.8	Audio Assembly	0104074J53
7.8.1	Boot, Microphone	Not supported. Please order Item No.7.8
7.8.2	Microphone	Not supported. Please order Item No.7.8
7.8.3	Speaker	Not supported. Please order Item No.7.8
7.8.4	Flex, UC Speaker	Not supported. Please order Item No.7.8
7.8.5	Kapton Tape, Speak-er	Not supported. Please order Item No.7.8
7.9	Conductive Pad, Speaker	75012224001
7.10	Speaker Retainer Assembly	0104070J43
7.11	Screw, Speaker Re-tainer	0386434Z02
7.12	Interface Board As-sembly	0104070J63
7.13	Flex, Interface	PF001288A01
7.14	Poron Pad, Interface Board	HW000675A01
7.15	Bluetooth, GPS An-tenna	AN000151A01
7.16	Screw, Bluetooth Board	0371160D01
8	Back Cover Kit	
8.1	Main Board	Not supported. Please order Item No.8
8.2	Back Assembly Kit	Not supported. Please order Item No.8
8.2.1	Screw, Main Board	03012073001
8.2.2	Retainer, GOB	15012287002
8.2.3	Seal, Top Control	32012269001
8.2.4	Pad, Thermal	75012234001
8.2.5	Battery Contact Seal	32012254001
8.2.6	Chassis Assembly Kit	0104070J44

Issue Date: 26/07/21

Motorola Solutions follows a policy of continual product improvement. For this reason, the exploded diagrams and parts listed might not be compatible with future revisions of this product and these changes could occur without notice.

RADIOTRADE

Motorola DP3441e and DP3661e
Exploded Diagrams & Parts Lists

RadioTrade Ltd
Unit 5, The Ringway Centre
Edison Road, Basingstoke
RG21 6YH, UK
T: 01256 40 60 50
E: sales@radiotrade.co.uk
www.radiotrade.co.uk

DP3441e Parts List Cont.

Item	Description	Part Number
9	Screw, Housing	0316281H01
10	RF Adaptor Plug	38012048001
11	RF Adaptor Plug La-bel	33012058001
12	Label, FCC	54012336001
13	Gasket	3286058L01
14	Label, Ventilation	5478220A01
15	Battery	NA
16	Label, TIA	Non-field replaceable
17	Option Board Kit MPT Option Board Kit	PMLN7324_S PMLN7394_S
17.1	Screw, GOB	03012076001
17.2	Flex, GOB to Main Board	84012606001
17.3	Flex, Power Saving	PF001289A01
17.4	Main Board Assem-bly	Not supported. Please order Item No.17
18	Label, RTTE	Printed by Service Center

For Radios with an Option Board Please Include:

- Item no. 17.1 (Screw, GOB)
- Item no. 17.2 (Flex, GOB to Main Board)
- Item no. 17.3 (Flex, Power Saving)
- Item no. 17.4 (Main Board Assembly)

Table 34

Item	Part Number
Back Cover Kit, 136–174 MHz, 5 W, NKP, GNSS, BT	PMLD4811_S
Back Cover Kit, 136–174 MHz, 5 W, LKP, GNSS, BT	PMLD4846_S
Back Cover Kit, 403–527 MHz, 4 W, NKP, GNSS, BT	PMLE5121_S
Back Cover Kit, 403–527 MHz, 4 W, LKP, GNSS, BT	PMLE5166_S

Issue Date: 26/07/21

Motorola Solutions follows a policy of continual product improvement. For this reason, the exploded diagrams and parts listed might not be compatible with future revisions of this product and these changes could occur without notice.

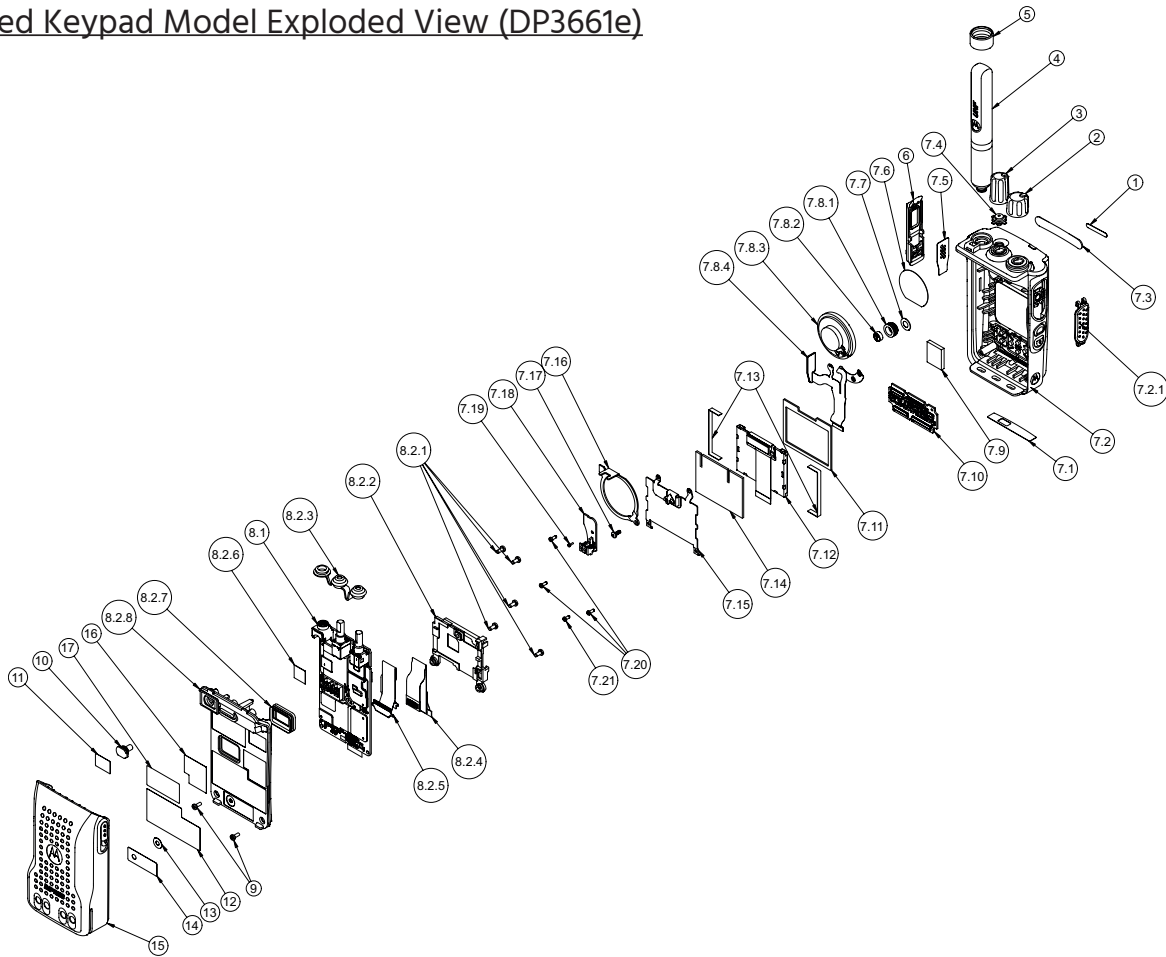
RADIOTRADE

Motorola DP3441e and DP3661e
Exploded Diagrams & Parts Lists

RadioTrade Ltd
Unit 5, The Ringway Centre
Edison Road, Basingstoke
RG21 6YH, UK
T: 01256 40 60 50
E: sales@radiotrade.co.uk
www.radiotrade.co.uk

DP3441e and DP3661e Exploded Mechanical View and Parts List

Limited Keypad Model Exploded View (DP3661e)



Item	Description	Part Number
1	Product Number Label	LB000793A02
2	Knob, Volume	36012005001
3	Knob, Frequency	36012004001
4	NA	NA
5	NA	NA
6	Dust Cover Assembly	0104058J40
7	Front Cover Kit	PMLN7546_
7.1	Label, Front housing	LB000707A01
7.2	Front Housing Assembly	Not supported. Please order Item No.7
7.2.1	Paddle PTT	HN000884A01
7.3	Nameplate	LB000797A01

Issue Date: 26/07/21

Motorola Solutions follows a policy of continual product improvement. For this reason, the exploded diagrams and parts listed might not be compatible with future revisions of this product and these changes could occur without notice.

RADIOTRADE

Motorola DP3441e and DP3661e
Exploded Diagrams & Parts Lists

RadioTrade Ltd
Unit 5, The Ringway Centre
Edison Road, Basingstoke
RG21 6YH, UK
T: 01256 40 60 50
E: sales@radiotrade.co.uk
www.radiotrade.co.uk

DP3661e Parts List Cont.

Item	Description	Part Number
7.4	Button, Emergency	38012008001
7.5	UC Escutcheon	33012020001
7.6	Mesh, Speaker	Not supported. Please order Item No.7
7.7	Mic Membrane with Stiffener	Not supported. Please order Item No.7
7.8	Audio Assembly	0104074J53
7.8.1	Boot, Microphone	Not supported. Please order Item No.7.8
7.8.2	Microphone	Not supported. Please order Item No.7.8
7.8.3	Speaker	Not supported. Please order Item No.7.8
7.8.4	Flex, UC Speaker	Not supported. Please order Item No.7.8
7.9	Poron, UC	HW001112A01
7.10	Keypad Board	0104074J51
7.11	LCD Front Poron	Not supported. Please order Item No.7
7.12	Display Module	72012010004
7.13	Display Side Padding	75012137001
7.14	LCD Back Poron	HW001081A01
7.15	LCD Retainer As-sembly	0104074J52
7.16	Speaker Retainer	BR000242A01
7.17	Screw, Speaker Re-tainer	0386434Z02
7.18	Bluetooth, GPS An-tenna	AN000151A01
7.19	Screw, Bluetooth Board	0371160D01
7.20	Screw, LCD Retainer	0378212A04
7.21	Screw, Keypad Board	0378212A02
8	Back Cover Kit	
8.1	Main Board	Not supported. Please order Item No.8
8.2	Back Assembly Kit	Not supported. Please order Item No.8
8.2.1	Screw, Main Board	03012073001
8.2.2	Retainer, GOB	HN000976A01
8.2.3	Seal, Top Control	32012269001
8.2.4	Keypad Flex	PA001450A01
8.2.5	Main Flex	PF001451A01
8.2.6	Pad, Thermal	75012234001
8.2.7	Battery Contact Seal	32012254001
8.2.8	Chassis Assembly Kit	0104070J44

Issue Date: 26/07/21

Motorola Solutions follows a policy of continual product improvement. For this reason, the exploded diagrams and parts listed might not be compatible with future revisions of this product and these changes could occur without notice.

RADIOTRADE

Motorola DP3441e and DP3661e
Exploded Diagrams & Parts Lists

RadioTrade Ltd
Unit 5, The Ringway Centre
Edison Road, Basingstoke
RG21 6YH, UK
T: 01256 40 60 50
E: sales@radiotrade.co.uk
www.radiotrade.co.uk

DP3661e Parts List Cont.

Item	Description	Part Number
9	Screw, Housing	0316281H01
10	RF Adaptor Plug	38012048001
11	RF Adaptor Plug La-bel	33012058001
12	Label, FCC	54012336001
13	Gasket	3286058L01
14	Label, Ventilation	5478220A01
15	Battery	NA
16	Label, TIA	Non-field replaceable
17	Label, RTTE	Printed by Service Center

Issue Date: 26/07/21

Motorola Solutions follows a policy of continual product improvement. For this reason, the exploded diagrams and parts listed might not be compatible with future revisions of this product and these changes could occur without notice.